


AI Industrial Wired Scanner

HS305DP


Introducing the HS305DP Industrial Wired Scanner, featuring cutting-edge fourth-generation AI scanning technology and dual-core processing power for unparalleled decoding performance. Tackling the toughest challenges in manufacturing DPM (Direct Part Marking) code reading, including distortion, curved surfaces, dot peening, blur, defects, and low contrast, this scanner delivers precise decoding, ensuring a seamless and efficient scanning experience.







CMOS

1million → 1.3million






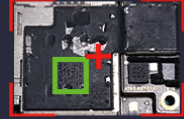
High-precision reading of one-dimensional high-density long barcodes



CPU

Dual processor
The Fourth generation AI scanning technology boosted





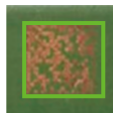
Rapid positioning of barcodes in complex backgrounds

Excellent barcode reading capabilities, Stronger performance

Professional in reading barcode with poor engraving quality



Quiet zone worn QR code



Laser engraving codes with uneven contrast



FPC surface perforated DPM code



Dot peen code on Auto parts



Low-contrast QR code made of graphite



PCB Perforated DPM Code



DPM code engraved on cooper foil surface

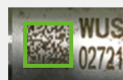


Laser engraving code on black resin with reflective and uneven surface



Ultra Low-contrast QR code on SSD shell

Laser engraving code on the bright surface of Arc metal for auto parts



Application scenarios: manufacturing

Lithium battery scenario/Auto parts scenario/3C electron scenario
Photovoltaic scenario/Home appliance assembly scenario



HS305DP Performance, physical, and environmental parameters

Image Sensor	1280*1080 COMS sensor with global shutter	
Camera Option	DPM	
Illumination LEDs	Intelligent adjustable diffuse	
Aiming	Cross-shape laser aimer	
Sensor Speed	60FPS	
Support Symbologies	1D: Code39, Code128, Code93, Codabar, UPC/EAN, 12of5, GS1 128 ,etc. 2D: PDF417, MicroPDF417, Aztec, Data Matrix, QR Code, Micro QR, etc.	
Scan Angle	Pitch angle $\pm 60^\circ$ and skew angle $\pm 55^\circ$	
Scan Density	1D code: 3mil 2D code: 5mil	
Standard Range for typical Symbols	Barcode Density	Depth of Field
	3mil Code128	3.5cm~6.5cm
	5mil Code128	1.5cm~18cm
	10mil Code128	0.5cm~28cm
	EAN 13	1cm~26.5cm
	5mil DM/QR	3.7cm~7.2cm
	10mil DM/QR	1.9cm ~ 15.9cm
20mil DM/QR	0~33.5cm	
Communication interface	RS232, USB keyboard, USB COM	
Dimension	177.08 * 85.65 * 68.5mm	
Weight	162g \pm 3g	
Operating Temperature	0°C to 50°C	
Storage Temperature	-20°C to 70°C	
Humidity	5% to 95% RH non-condensing	
Environmental Sealing	IP54(Water and Dust Resistant)	
Light Levels	0 to 100,000 Lux	
Drop Specification	Operational after 50 drops from 6 ft. (1.8m) to concrete	
Impact Specification	2000 rounds of 0.5m tumble	
Shell Material	Highly resistant industrial plastic	
ESD Protection	± 15 kV Air discharge, ± 8 kV direct discharge	
Certificates	CE, FCC, RoHS	